

State of Wyoming Corner Record

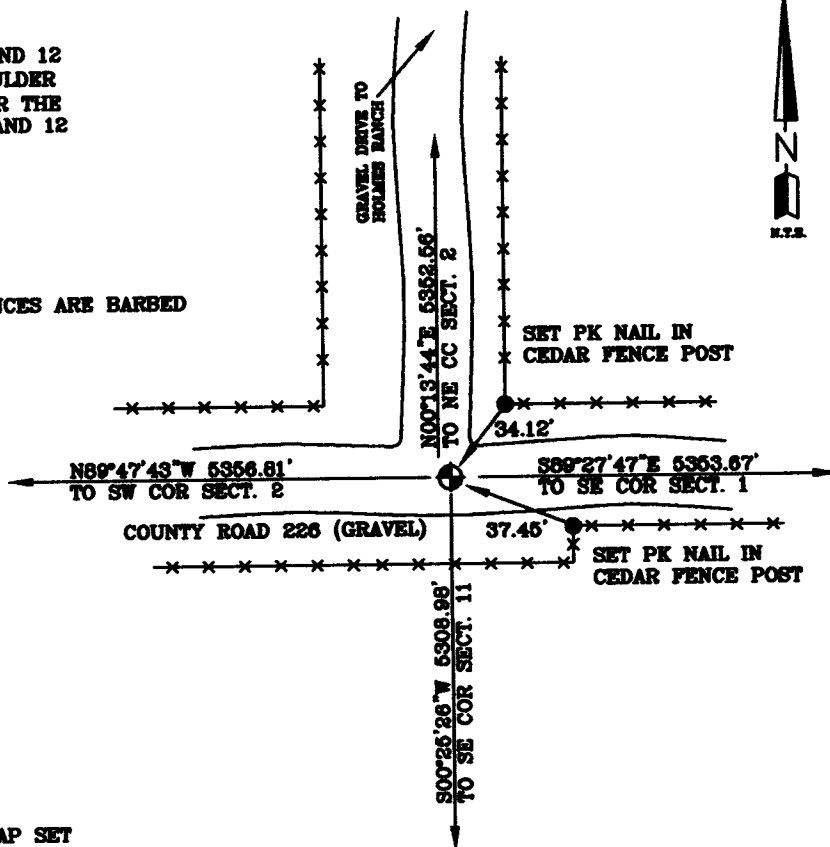
(In compliance with the **CORNER PERPETUATION AND FIELDING ACT**, Wyoming Statutes, 1997 Section 33-29-140 et. seq., and the Rules and Regulations of the Board of Professional Engineers and Professional Land Surveyors)

Reverse side of this form may be used if more space is needed.

Record of original survey and citation of source of historical information (if corner is lost or obliterated). Description of corner monumentation evidence found and/or monument and accessories established to perpetuate the location of this corner. Sketch of relative location of monument, accessories, and reference points with course and distance to adjacent corner(s) (if determined in this survey). Method and rationale for reestablishment of lost or obliterated corner.

G.L.O. RECORD:
 NORTH BETWEEN SECTIONS 11 AND 12
 VA. 15°11'E. SET A GRANITE BOULDER
 AT 80.00 CHAINS 14"X10"X7" FOR THE
 CORNER TO SECTIONS 1, 2, 11 AND 12

NOTE:
 ALL FENCES ARE BARBED
 WIRE.

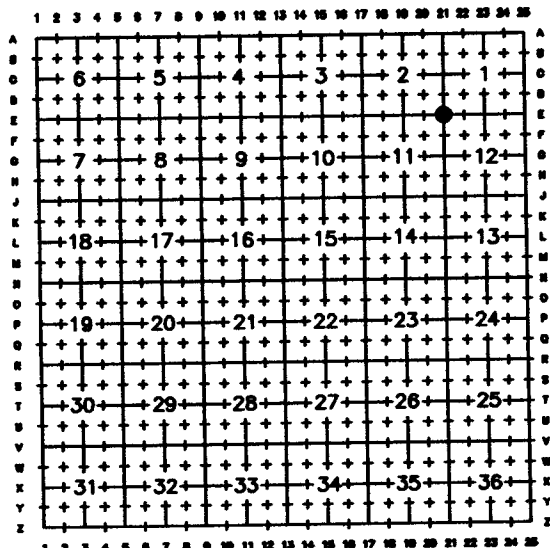


AT THE CORNER:
 FOUND NOTHING.
 PLACED A 2 1/2" ALUMINUM CAP SET
 ON A 5/8" X 24" REBAR 0.5' BELOW
 THE SURFACE OF A GRAVEL ROAD
 STAMPED AS SHOWN. CORNER POSITION
 WAS ESTABLISHED BY DOUBLE
 PROPORTION METHOD USING THE
 SOUTHWEST CORNER OF SECTION 2,
 THE SOUTHEAST CORNER OF SECTION
 1, THE SOUTHEAST CORNER OF
 SECTION 11 AND THE CLOSING
 CORNER TO SECTIONS 1 AND 2.

Date of Field Work: 9/15/06

Office Reference: XXX

Cross Index Plat



Firm/Agency, Address

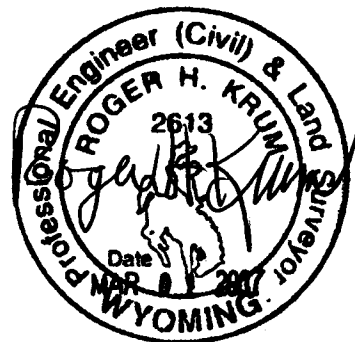
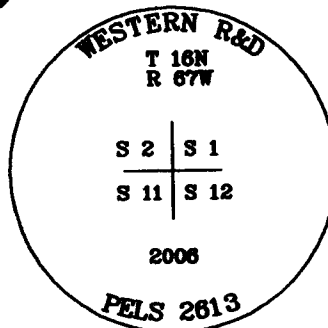
Western R&D, Ltd.
 5809 Yellowstone Rd., Suite B
 Cheyenne, Wyoming 82009

This corner record was prepared
 by me or under my direction
 and supervision.

SEAL & SIGNATURE

Telephone Number: (307) 632-5656

Denotes Monument Set



Corner Name Southeast Corner Section 2, T 16 N, R 67 W, 6th P.M.
 County: Laramie Wyoming

Cross-Index No.: E-21

SBRPEPLS/PLSW: March 1994; PLSW January 1998